

COMPANY PROFILE



ABOUT US

WHO WE ARE

WESTEND DIAMOND ENERGY LIMITED (WEDEL) is an incorporated company under the laws of the Federal republic of Nigeria since 2005 with 100% Nigerian ownership, and expatriate partnerships committed to providing professional services in the area of Independent Rig Inspection, QHSE Inspections, DROPS Survey, Rig Start-ups, Condition Survey, Process Safety and QHSE Consultancy, Project Commissioning, Process Shutdown/Tank Cleaning, Training etc.

Our key personnel have been in the Oil and Gas Industry, Petrochemicals, Refineries, and other sectors over the last 10years. We have a track record for providing quality service to our clients.

This commitment to quality is based on our belief that quality shall not be compromised in the drive to provide satisfactory and economically sensible service to our numerous clients. We have professionals and specialists with vast knowledge in engineering inspection and certification whose endorsement of our jobs and certificates guarantee international acceptability.

Our sector includes the Oil and Gas, Energy, Marine, Drilling and Production, Transportation, Food and Hospitality, Refineries, Pharmaceutical, Petrochemical plants, Gas plants, Bottling companies / breweries, Construction firms and all industrial and commercial processes that have need for Safety, Health, Environment, Quality and Quantity evaluation.

We have carried out major inspections and consultancy with:



RC#:627731

NNPC
NAOC
SEPLAT
NPDC,
GEOPLEX DRILLTEQ LTD.
SAHARA GROUP
HILONG
IMPERIAL HEALTH SCIENCE
DEPTHWIZE
PILLAR OIL LIMITED
TRANSOCEAN
YEMEN DRILLING
STAROIL-SUDAN
DON MAC LIMITED
OES
ENERGIA
MONIPULO
OANDO
WELLSMART
UNITECH

These covered a variety of jobs either as direct contracting or subcontracting for Jack up Rigs, Drill Barges, Drill Ships, Land Rigs, Supply Vessels, Platforms, Tugboats, Thermal Imaging, Noise Mapping, Crane inspections and Surveys, and various other jobs. A detail of which is outlined and explained in our profile.



WEDEL

Our Mission

To deliver economic Value to Clients through Quality, Health, Safety, Environment and Social Responsibilities, management of their assets, projects, products and systems, resulting to operational risk reduction and improved performance.

Our Vision

To become a leader in our industry and a major player in each of our market segments and key geographical market.



OUR POLICIES

QHSE Policy

The long-term business success of Westend Diamond Energy Limited depends on our ability to continually improve the quality of our services and products while protecting people and the environment. Emphasis is placed on ensuring human health, operational safety, environmental protection, quality enhancement, and community goodwill. This commitment is in the best interests of our customers, our employees and contractors, our stakeholders and the communities in which we live and work.

Line management has a leadership role in the communication and implementation of, and ensuring compliance with QHSE policies and standards.

We are committed to:

- Protect, and strive for improvement of the health, safety, and security of our people at all times.
- Eliminate Quality non-conformances and HSE accidents.
- Meet specified customer requirements and ensure continuous customer satisfaction.

- Set Quality & HSE performance objectives, measure results, assess and continually processes, services, and product quality, using an effective management system.
- Plan for, respond to and recover from any emergency, crisis, and business disruption.
- Minimize our impact on the environment through pollution prevention, reduction of natural resource consumption and emissions, and the reduction and recycling of waste.
- Apply our technical skills to all HSE aspects in the design and engineering of our services and products.
- Communicate openly with stakeholders and ensure an understanding of our QHSE policies, standards, programs and performance. Reward outstanding QHSE performance.
- Improve our performance on issues relevant to our stakeholders that are of global concern and on which we can have an impact and share our knowledge of successful QHSE programs and initiatives.



LOCAL CONTENT POLICY

Westend Diamond Energy Limited (WEDEL) is committed to the development of the oil and gas business in Nigeria in a manner that is consistent with the Nigerian Oil & Gas Industry Content Development Act 2010 (NOGICD Act) on Nigerian Content Development (NCD).

WEDEL is owned and managed by Nigerians, with a predominantly Nigerian workforce. We ensure that our projects are consistent with the level set in the Schedule of The Act and any other targets as may be directed by the Nigerian Content Development and Monitoring Board (NCDMB). The bulk of our materials are sourced locally and when they are not available, the company will have no alternative than to source beyond the shores of Nigeria. When that is done, the appropriate arm of the government will be informed of the need for local availability of such material. It is our policy to engage, train and promote a local workforce to manage, supervise, operate, and execute projects.

Training Policy

WEDEL provides training and capacity development for its employees and the training programs are designed to achieve the following objectives:

- Build Nigerian manpower capacity and critical technical capabilities.
- Improve productivity, effectiveness, efficiency, and services by the development of qualified and competent Nigeria manpower for better utilization of talents, abilities, and potentials of Nigerian personnel.
- Help Nigerian employees to develop their knowledge and skills so that they might become better qualified to perform the duties of their present jobs and advance to more responsible positions on the nationalization timeline.

- Provision for the development of national managers and supervisors capable of organising and developing goals and objectives





COMMUNITY AFFAIR POLICY

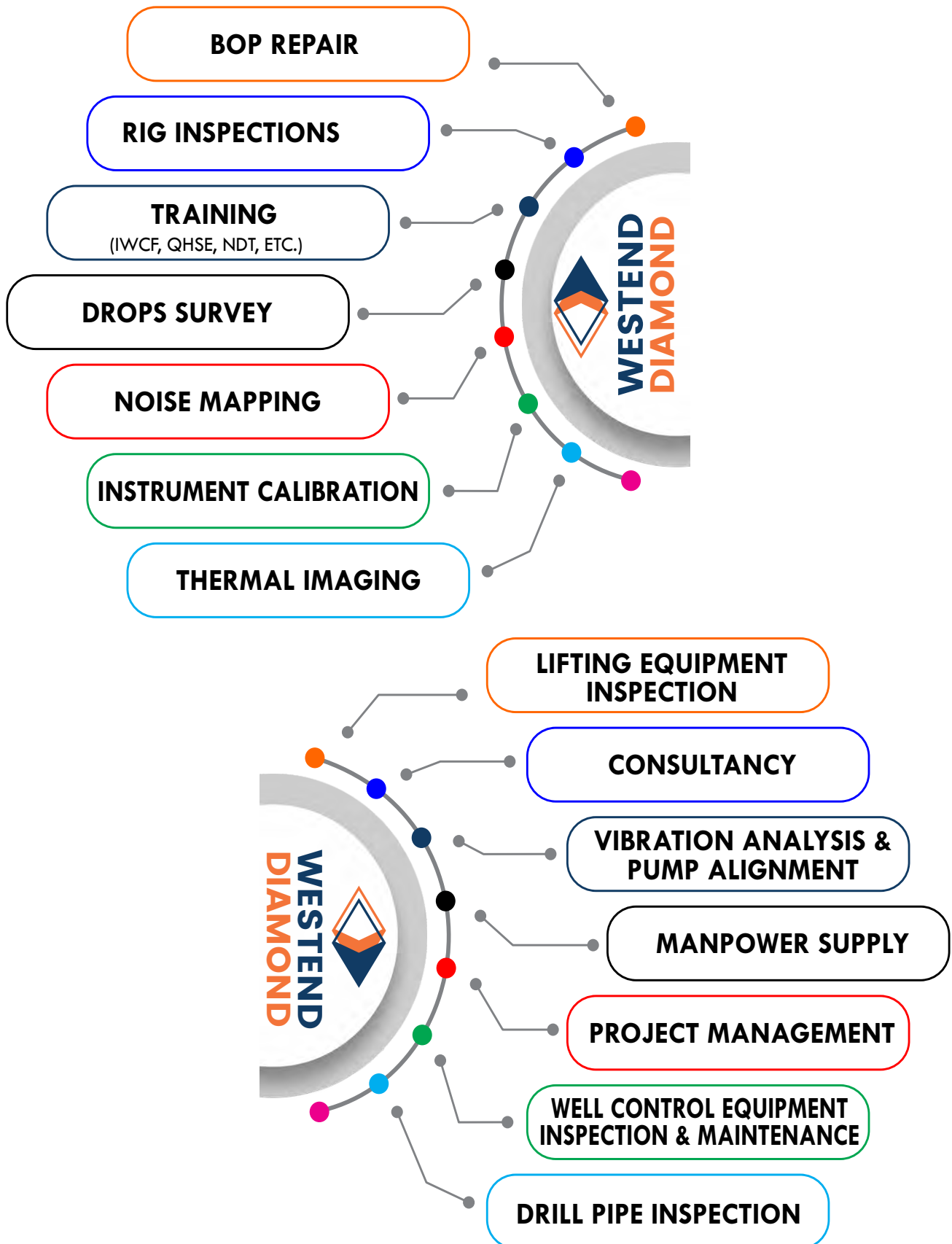
Westend Diamond Energy Limited is committed to the developing and maintaining friendly and mutually beneficial relationship with its host communities Leader, Youth Leaders, and other Interest groups. To promote mutually beneficial relationships with our host communities, WEDEL in conjunction with its Client shall:

- Build sustainable development partnerships by enlisting the full participation of host communities designated representatives in project planning, implementation, and monitoring.
- Establish ongoing communication with the relevant social segments of host communities to address their concerns and aspirations.
- Respond to formal community requests in an appropriate and timely manner.
- Continuously assess the social impact of all new core business activities and take any needed preventative or mitigating measures.
- Require all Westend Diamond Energy Limited and subcontractor staff to relate with host

communities in a respectful and responsible manner.

- Ensure that contracting organizations adopt standards of work and behaviour that are wholly compatible with this policy.
- Establishing a rapid response approach to complaints of the communities' implementation of a behaviour code for company employees regarding community relations and ensuring the observance thereof.
- Prohibition of employees interference in local affairs as well as behaviour regarded by the communities as being inconsistent or offensive to local traditions, customs or religious practices and continual monitoring of the situation as to averting any untoward development.
- Assisting the communities in the development of identified socially beneficial projects within the limits of the Company's activities/resources.
- Assisting the communities in harnessing and developing available local manpower.

OUR SERVICES

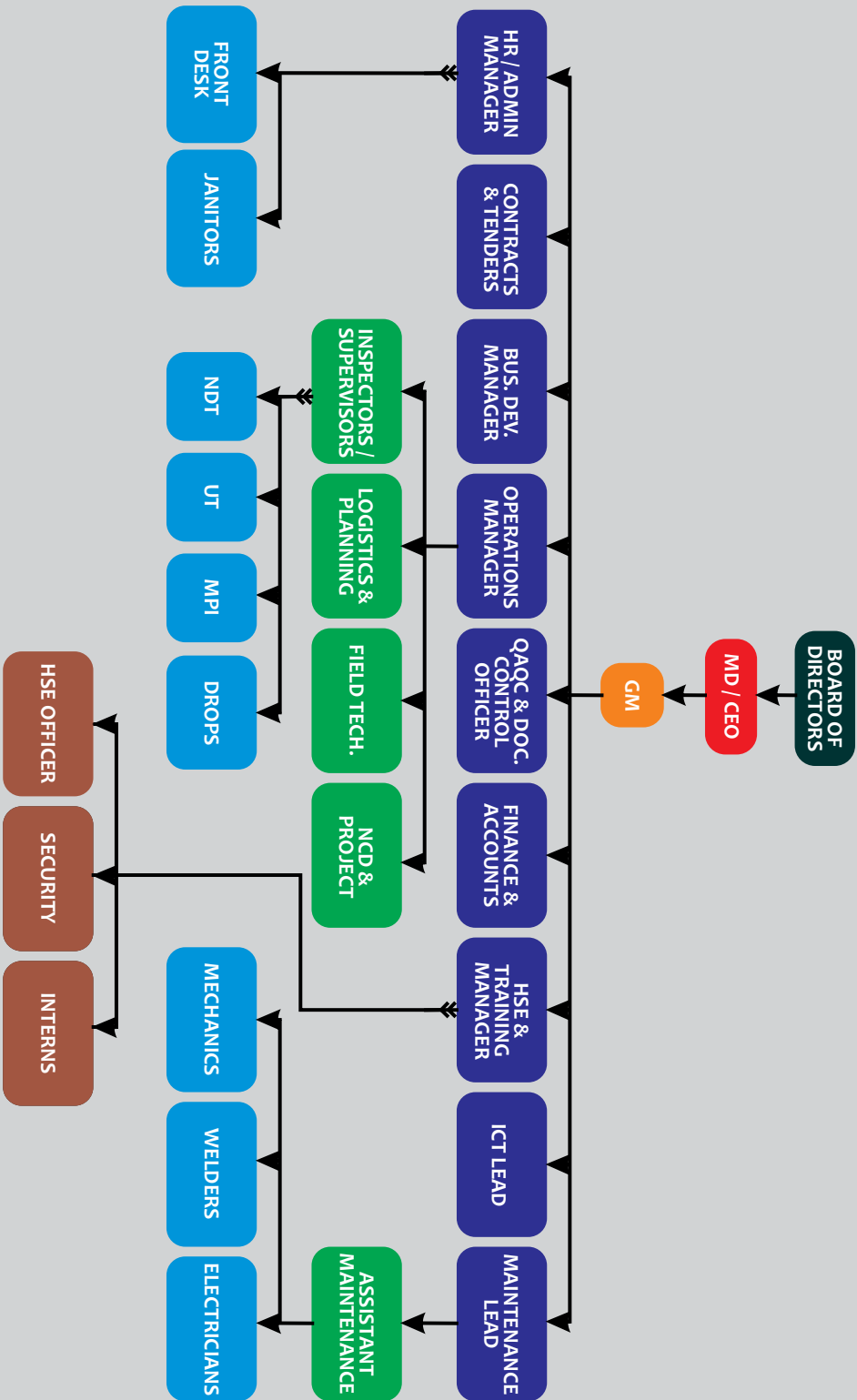


OUR CERTIFICATIONS

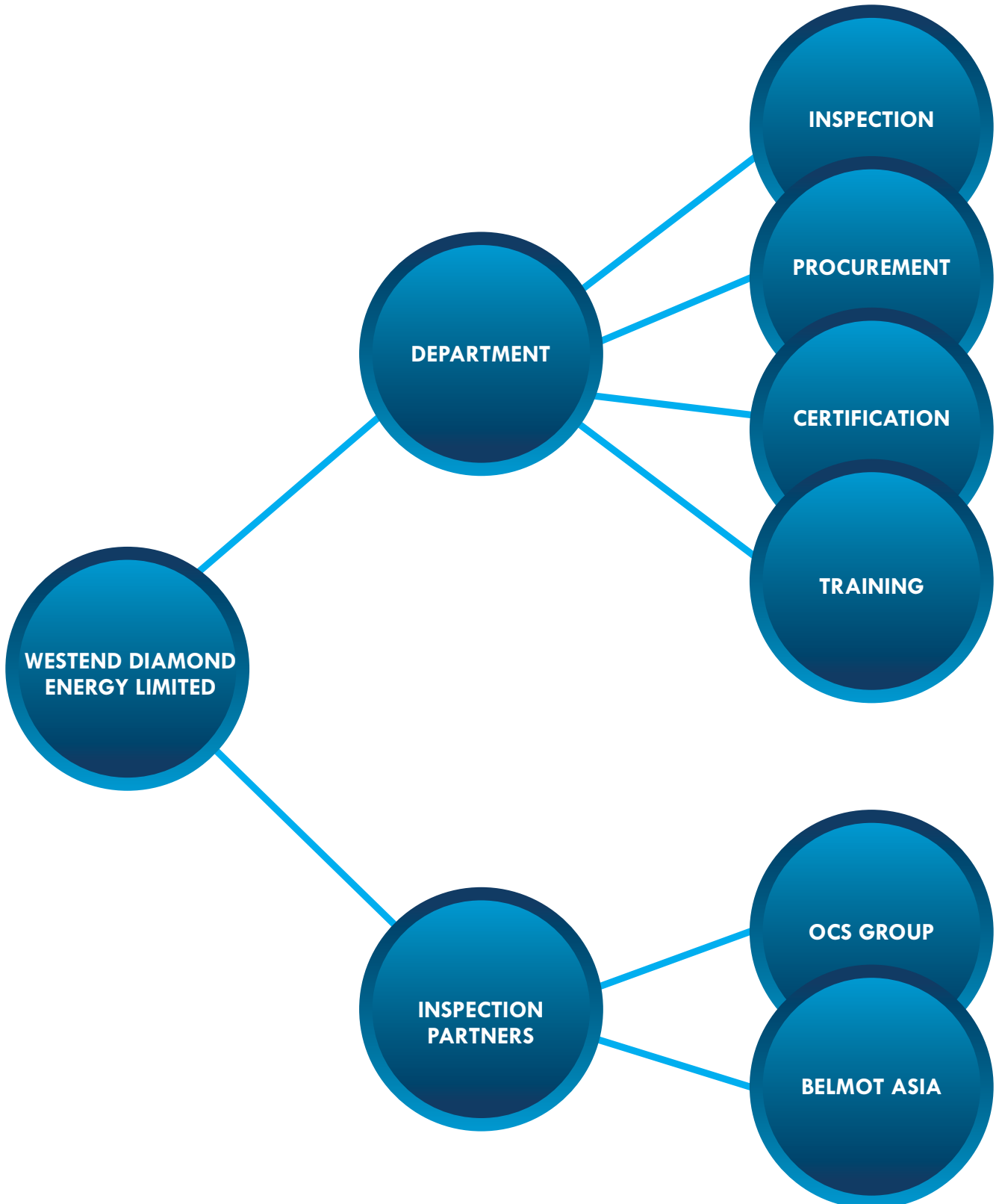


OUR STRUCTURE














ORGANIZATIONAL CHART



PARENT COMPANY



OUR CLIENTS

S/N	Company Name	Location	Logo
1	OES ENERGY SERVICES LIMITED	RIVERS STATE	
2	CHARLVON LIMITED	LAGOS STATE	
3.	SEPLAT PETROLEUM DE ELOPMENT COMPANY	LAGOS STATE	
4.	NAOC - NIGERIAN AGIP OIL COMPANY	RIVERS STATE	
5.	JAN DE NUL NV	BENIN REPUBLIC	
6.	ORIENTAL ENERGY RESOURCES LIMITED	LAGOS STATE	
7.	DEPTHWIZE NIGERIA LIMITED	RIVERS STATE	
8.	SCORPIO DRILLING INTERNATIONAL	RIVERS STATE	
9.	PILLAR OIL LIMITED	RIVERS STATE	
10.	BRITISH OIL AND GAS EXPLORATION AND PRODUCTION	DELTA STATE	
11.	ENERGIA NIGERIA LIMITED	LAGOS STATE	
12.	DRILLING PETRO-DYNAMICS	RIVERS STATE	
13.	NECONDE ENERGY LTD.	RIVERS STATE	

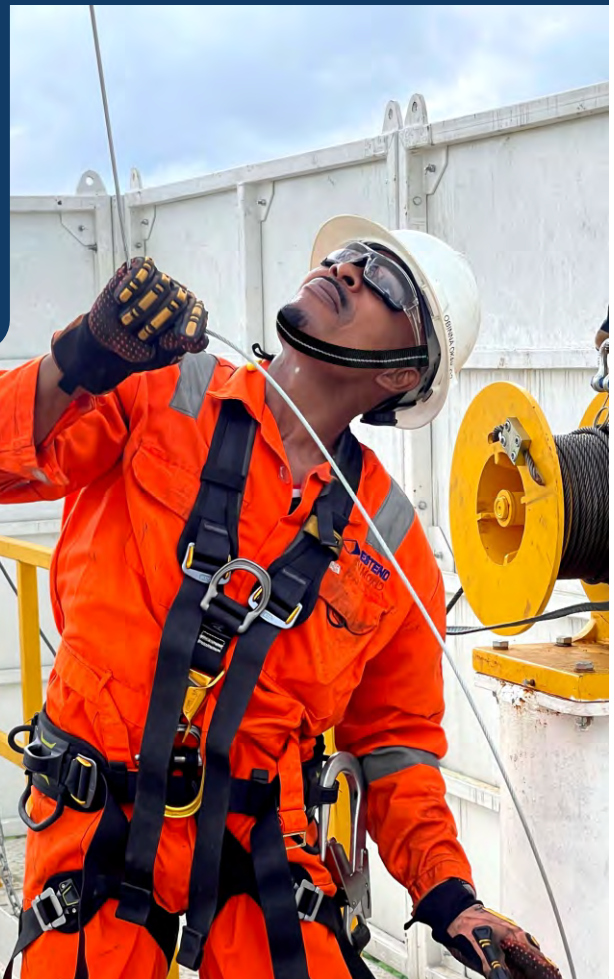
S/N	Company Name	Location	Logo
14.	NORTHERN OFFSHORE	UNITED KINGDOM	
15.	THOME OFFSHORE MANAGEMENT PTE LTD	LAGOS STATE	
16.	KCA DEUTAG NIGERIA LTD.	RIVERS STATE	
17.	AMERICAN BLOCK	UNITED STATE	
18.	TURKEY INFRASTRUCTURE SOLUTIONS	SOUTH AFRICA	
19.	RAYTHEON ENERGY LIMITED	LAGOS STATE	
20.	SPECIALTY DRILLING FLUIDS LIMITED	RIVERS STATE	
21.	NIGERIAN PETROEUM DEVELOPMENT COMPANY	EDO STATE	
22.	MDS LOGISTICS LIMITED	LAGOS STATE	
23.	EXXON MOBILE	AKWA IBOM STATE	
24.	WELLSMART DRILLING NIGERIA LIMITED	LAGOS STATE	
25.	ENERGEED RESOURCES LIMITED	LAGOS STATE	
26.	CARDINAL DRILLING SERVICES	LAGOS STATE	

	DATE	JOB DESCRIPTION	ORGANIZATION
1	2020-12-29	Pressure testing of 4"1003 (male & female) 2"1502. Rated at 7500psi	DRILLOG PETRO-DYNAMICS
2	2020-12-29	Thermal Imaging Survey Onpompei in Cotonou	JAN DE NUL NV
3	2020-12-23	Thermal Imaging Survey on Pompei	JAN DE NUL GROUP
4	2020-12-22	Management Consultancy for the drilling activities of OML 13	GOLDEN AGE DRILLING SERVICES LIMITED
5	2020-12-19	Valves Recertitication with discounts	JOENY HOLDINGS LIMITED
6	2020-12-19	Accumulator Unit Recertification with discounts.	JOENY HOLDINGS LIMITED
7	2020-12-19	7" BOP Recertification	JOENY HOLDINGS LIMITED
8	2020-12-19	Various Well Control Equipment Recertification	JOENY HOLDINGS LIMITED
9	2020-12-18	Tubular Inspection for 4 Wells	GOLDEN AGE DRILLING SERVICES LIMITED
10	2020-12-17	Various Well Control Equipment Recertification	JOENY HOLDINGS LIMITED
11	2020-12-16	Seal for Well Control Equipment Recertification	JOENY HOLDINGS LIMITED
12	2020-12-16	Various Well Control Equipment Recertification	JOENY HOLDINGS LIMITED
13	2020-12-15	Lifting Gear Inspection for DEPTHWIZE RIG Imperial LMR-IMP-3349-	DEPTHWIZE NIGERIA LIMITED
14	2020-12-11	Two Mud Pump Attendance	SCORPIO DRILLING INTERNATIONAL
15	2020-12-11	Mud Pump Rental.	SCORPIO DRILLING INTERNATIONAL
16	2020-12-02	Annual Crane Condition Survey and Recertification	DEPTHWIZE NIGERIA LIMITED
17	2020-12-02	Training and Revalidation of Certificates	ETOPO ENERGY LIMITED
18	2020-12-02	Inspection of lifting Eyes and Accessories ETOPO HPU at Ebegoro 8	ETOPO ENERGY LIMITED
19	2020-12-01	Annual Condition Survey of Land Drilling Rig	BRITISH OIL AND GAS EXPLORATION & PRODUCTION
20	2020-11-26	BOP Hydraulic Seals for Annular, Single & Double with transportation & clearance	CHARLVON LIMITED
21	2020-11-26	Calibration of weighing Scale Data Loggers and Thermometer	WEST AFRICAN CATERING NIGERIA LIMITED
22	2020-11-19	Nipex Tender No.21000001480 - Provision of Coiled Tubing & Pumping Services for NAOC JV Operations	NAOC - NIGERIAN AGIP OIL COMPANY
23	2020-11-16	Nipex Tender No.21000001480 - Provision of Coiled Tubing & Pumping Services for NAOC JV Operations	NAOC - NIGERIAN AGIP OIL COMPANY
24	2020-11-16	Various Inspections on RIG 201 CHAN-MGNT-SFTY-REQ-20-036	CHARLVON LIMITED
25	2020-11-13	Helideck Friction Test and Helideck Perimeter Net Drop Test	OES ENERGY SERVICES LIMITED
26	2020-11-11	NDT and Colour Coding of Handling Tools on Rig Imperial LMR-IMP-3382	DEPTHWIZE NIGERIA LIMITED
27	2020-11-11	Tubular Inspection	DEPTHWIZE NIGERIA LIMITED
28	2020-11-10	Drops Survey on OES Respect	OES ENERGY SERVICES LIMITED
29	2020-11-09	Integrity Helideck Friction Test	OES ENERGY SERVICES LIMITED
30	2020-11-07	Inspection of Tugger Winches and Wire Rope for Rig Magestic	DEPTHWIZE NIGERIA LIMITED
31	2020-09-09	Inspection of Containers and Lifting Gears	ETOPO ENERGY LIMITED

	DATE	JOB DESCRIPTION	ORGANIZATION
32	2020-09-08	Inspection and Load Test of BOP Trolley LMR-IMP-3377	Depthwise Nigeria Limited
33	2020-09-07	Inspection of Pipe Handling Tools for Rig 201 CHANL-MGNT-SFTY-REQ-20-023	Charlvon Limited
34	2020-09-04	Inspection & Load Test of Tugger Winches and Wire Rope for Poseidon Express PE01D-20-0131	Thome Offshore Management PTE Ltd.
35	2020-09-03	Inspection of Tugger Winches and Wire Rope for Poseidon Express	Thome Offshore Management PTE Ltd.
36	2020-08-27	Rental of 13 5/8" 10k Single BOP and 2 7/8"x2 7/8 Dual Offset Rams for Egbegoro 8 P&A.	NAOC - Nigeria Agip Oil Company
37	2020-08-26	Dropped Object Survey and Management for Rig 201	Charlvon Limited
38	2020-08-26	Dropped Object Survey and management for RIG 201	Charlvon Limited
39	2020-08-14	Inspection of Mast Raising Lines and Drawworks Airtank CHANL-MGNT-DRILL-REQ-20-039	Charlvon Limited
40	2020-08-12	Provision of RIG Inspection for Seplat Drilling Company	Seplat Petroleum Development Company
41	2020-08-10	OCTG Inspection and Certification	Charlvon Limited
42	2020-08-06	Recertification of Accumulator Unit according to API 16D.	KCA DEUTAG Nigeria Ltd.
43	2020-08-06-5	Lumpsum Accident Investigation of failed Drawworks Brake on PDL 101.	Drillog Petro-Dynamics
44	2020-07-14	Load Test and Re-certification of WFB X1 Crane	Thome Offshore Management PTE Ltd.
45	2020-07-14	Lifting Gear Inspection and Certification - CHANL-MGNT-SFTY-REQ-20-017	Charlvon Limited
46	2020-07-14	Lifting Gears and Padeyes Inspection for Depthwise Rig Majestic	Depthwise Nigeria Limited
47	2020-07-03	Inspection and Acceptance of Drilling Rigs for NPDC OML-13	Nigerian Petroleum Development Company
48	2020-07-01	Annual Condition Survey of TELFORD T31 Vessel	Raytheon Energy Limited
49	2020-06-16	Dropped Object Survey of SDF BR-301	Specialty Drilling Fluids Limited
50	20220-06-02	Inspection of Drilling Tools on KCA DEUTAG Rig T-26A	KCA DEUTAG Nigeria Ltd.
51	2020-05-22	Rig Inspection and Acceptance of OES Rig Respect for OGB DEEP V	NAOC - Nigeria Agip Oil Company
52	2020-05-20	Calibration and Certification of Pressure Gauges at OML 026 Ozoro	Charlvon Limited
53	2020-05-16	Sundry Equipment Inspection on KCA Deutag Rig T-57	KCA DEUTAG Nigeria Ltd.
54	2020-05-16	Inspection of Sundry Equipment on KCA Rig T-26 Benin	KCA DEUTAG Nigeria Ltd.
55	2020-05-07	Thermal Imaging of Various Facilities in Nigeria	MDS Logistics Limited
56	2020-04-30	Annual Re-certification of Gauges on Rig Majestic	Depthwise Nigeria Limited
57	2020-03-26	Noise Survey on Ariosh Vessels	ARIOSH
58	2020-03-24	Thermal Imaging Per Site. 1. NRDC, Abuja FCT 2. Kano Depot, Kano State 3, ERDC, Aba, Abia State 4, Ikeja DC, Ikeja, Lagos State 5, ACME DC, OGBA, Lagos State 6, Federal Medical Warehouse, Oshodi, Lagos State.	MDS Logistics Limited
59	2020-03-22	Rental of 13 5/8"10k Single BOP and 2 7/8"X2 7/8 Dual Offset Rams for Egbegoro 8 P&A.	NAOC - Nigeria Agip Oil Company
60	2020-03-19 1	Rental of 13 5/8"10k Single BOP and 2 7/8"X2 7/8 Dual Offset Rams for Egbegoro 8 P&A.	ETOPO ENERGY PLC

	DATE	JOB DESCRIPTION	ORGANIZATION
61	2020-03-11	5 Yearly BOP Inspection and Recertification	WELLSMART DRILLING NIGERIA LIMITED
62	2020-03-11	Inspection of Lifting Gears and Padeyes	DEPTHWIZE NIGERIA LIMITED
63	2020-03-10	13 5/8"10M Single Hydraulic Ram Type Bop with Annular Type Bop Certification	ETOPO ENERGY PLC
64	2020-03-04	Elevator Inspection and Calibration of weighing scales	DEPTHWIZE NIGERIA LIMITED
65	2020-03-04	Calibration of Weighing Scales	DEPTHWIZE NIGERIA LIMITED
66	2020-03-04	Calibration of Industrial and domestic weighing scale per day	DEPTHWIZE NIGERIA LIMITED
67	2020-03-03	Rental of Duo Rams 3 1/2 by 3 1/2	OES ENERGY SERVICES LIMITED
68	2020-03-02	RG-10 Inspection and Calibration and Certification of Gauges on Rig T-57	KCA DEUTAG NIGERIA LTD.
69	2020-02-24	Thermal Imaging in Niger for Celsian Consulting LLC	CELSIAN CONSULTING
70	2020-02-19	Inspection and Certification of OES Intergrity	NAOC - NIGERIAN AGIP OIL COMPANY
71	2020-02-14	Rig Inspection and Audit Service for HPCN Rig 120 for Enageed Resources	ENAGEED RESOURCES LIMITED
72	2020-02-10	Complete DROPS Survey and Inspection	DRILLING PETRO-DYNAMICS
73	2020-02-07	Rig Inspection and Acceptance Test for Seplat	SEPLAT PETROLEUM DEVELOPMENT COMPANY
74	2020-02-06	Inspection and selection off various Rigless Units for NAOC	NAOC - NIGERIAN AGIP OIL COMPANY
75	2020-02-01	Inspection, Loadtest and Recertification of Sk1400 Crane MOPU	THOME OFFSHORE MANAGEMENT PTE LTD.
76	2020-01-27	Supply of 20ft and 40ft Portable Cabin	TECHNIP FMC PLC
77	2020-01-22	Baltic Crown Survey	AMERICAN BLOCK
78	2020-01-22	Inspection and Selection of WEAfri Coil Tubing Unit	NAOC - NIGERIAN AGIP OIL COMPANY
79	2020-01-22	Inspection and Selection of Electric & wireline Unit-4	NAOC - NIGERIAN AGIP OIL COMPANY
80	2020-01-22	Inspection and Selection of Electric & wireline Unit-3	NAOC - NIGERIAN AGIP OIL COMPANY
81	2020-01-22	Inspection and Selection of Electric & wireline Unit-2	NAOC - NIGERIAN AGIP OIL COMPANY
82	2020-01-22	Inspection and Selection of Electric & wireline Unit-1	NAOC - NIGERIAN AGIP OIL COMPANY
83	2020-01-22	Inspection and Selection of Coil Tubing for Hydroserve	NAOC - NIGERIAN AGIP OIL COMPANY
84	2020-01-22	Inspection and Selection of Slickline for Hydroserve OBEGB DEEP4	NAOC - NIGERIAN AGIP OIL COMPANY
85	2020-01-22	Inspection and Selection of Slickline for Energy OBGB DEEP4	NAOC - NIGERIAN AGIP OIL COMPANY
86	2020-01-20	21-1/4X2000 PSI Annular Rental	DEPTHWIZE NIGERIA LIMITED
87	2020-01-17	Rig Inspection and Condition Survey of IKENGA 101	FRONTIER EXPLORATION SERVICES (FES)
88	2020-01-15	The Calibration and Certification of one Martin Decker	KCA DEUTAG NIGERIA LTD.
89	2020-01-14	Inspection and Certification of Sundry Lifting Equipment	BENE PROJECTI
90	2020-01-13	Sundry Inspections for ETOPO Energy PLC	ETOPO ENERGY PLC
91	2020-01-13	Rental of 2-7/8" Drill Pipes	ETOPO ENERGY PLC

SN	DATE	JOB DESCRIPTION	ORGANIZATION
92	2020-01-09	The Supply of Scrap Metal Waste skip	THOME OFFSHORE MANAGEMENT PTE LTD.



TRAINING

Westend Diamond Energy Limited offers an impressive range of training programs designed to empower individuals and teams with the knowledge and skills necessary. We are duly registered and accredited with bodies like international well control forum (IWCF), Professional Evaluation and Certification Board (PCEB), Oil and Gas Trainers Association of Nigeria, International Association of Drilling Contractors (IADC).

Our training programs includes well control trainings with physical simulators and other drilling trainings, HSE trainings and other trainings such as drops training, rope access trainings, scaffolding trainings (basic & advanced), process control instrumentation & calibration trainings, NDTs.

We equip you with the expertise to handle complex well control scenarios and ensure the safety and efficiency of drilling operations. By combining theoretical knowledge with hands-on simulations, our programs prepare you for real-world experiences.



WEDEL TRAINING COURSES LIST

DRILLING TRAINING

1. Basic Drilling Technology
2. International Well Control Forum (IWCF)
3. Tubular Handling
4. Introduction to Hydraulic W/O Operation
5. Rig HSE
6. Drilling Equipment & Maintenance Course
7. Banksman Slinger
8. Roustabout Green Hand
9. Struck Pipe Prevention, Hole Clearing & Fishing Tools
10. Rigging & Slings
11. Rig Pass (IADC)
12. Volumetric Analysis
13. Intro. to International Maritime Dangerous Goods Code
14. Introduction to the Oil and Gas Industry
15. Rig Inspection and Safe Landing

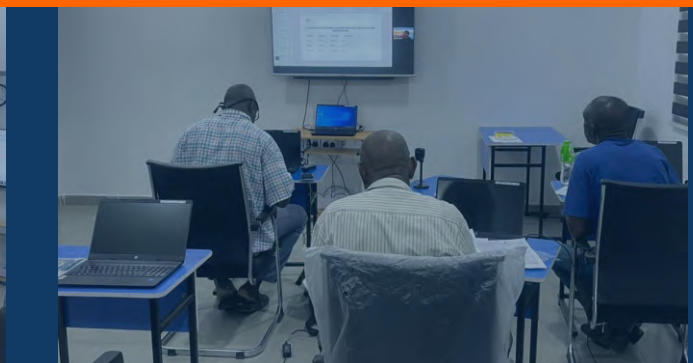
HSE TRAINING

- S/N DESCRIPTION DURATION AMOUNT (#)
1. Basic First Aid & CPR
 2. Forklift Safety Training
 3. Crane Safety Training
 4. Basic Firefighting
 5. Advanced Firefighting
 6. Work at Height
 7. Confined Space Entry
 8. Confined Space Rescue Training
 9. Advanced Safety Leadership
 10. Process Safety Management
 11. Effective Incident & Accident Investigation
 12. Emergency Response
 13. Fire Watcher
 14. Rescue and Retrieval from Height
 15. Breathing Apparatus (SCBA)
 16. Risk Assessment & Control

17. Lifting Supervisor (PIC)
18. IOSH Working Safely
19. IOSH Managing Safely
20. Authorized Gas Tester Levels 1&2
21. Hydrogen Sulphide & Cascade System Training
22. Basic Life Support "BLS"
23. Advanced Cardiac Life Support "ACLS"
24. Energy Control Program (Lockout & Tagout)
25. Permit to Work System
26. Behaviour Based Safety Training (DUPONT)
27. Ergonomics and Manual Handling
28. Safe Handling of Chemicals
29. Control of Substances Hazardous to Health
30. Environmental Awareness
31. Electrical Safety
32. Major Emergency Management

OTHER TRAININGS/DESCRIPTION DURATION AMOUNT

1. Thermal Imaging
2. Helicopter Landing Officer
3. Helideck Assistant
4. Process Control Instrumentation
5. Welding & Fabrication 3 Months
6. Welding Inspection 3 Months
7. Drops Training
8. IRATA Rope Access
9. Journey Management
10. Forklift Operator Certification (OPITO Curriculum)
11. Crane Operator Certification (OPITO Curriculum)
12. QAQC
13. Scaffolding Training Basic
14. Scaffolding Training Advanced 0
15. Blasting and Painting
16. Document Control Management
17. Corrosion Detection, Control and Prevention
18. NDT (MPI, UT, ET, PT, LT, VT, AE)
19. NDT Levels 1 & 2 5200,000/Technique



RIG ACCEPTANCE SERVICES, TESTING & CONDITION SURVEY

Westend Diamond Energy Limited (WEDEL) performs independent rig survey and inspection on all offshore and onshore platforms to a broad customer base globally for the past 10 years. Our services are best suited for your company objectives and targets. Our proven practical and efficient approach to rig inspection and commissioning services provides an early detection of deficiencies on equipment and system to prevent downtime. Our detailed surveys provide you with the information you need to enable an informed decision to be made when considering hiring or buying a rig.

OUR EXPERTISE COVERS BUT NOT LIMITED TO:

- *Rig acceptance
- *Rig selection
- *Annual Rig condition survey
- *API 4G Derrick Inspection Services (Category I, II, III and IV)

Our mission is to help our clients eliminate and minimize operational risks, increase total asset performance, optimize operational cost, and improve reliability of assets.





WELL CONTROL EQUIPMENT MAINTENANCE & RECERTIFICATION SERVICE

Westend Diamond Energy limited offers full maintenance, inspection, testing, overhauling and assembly of well control equipment to evaluate the integrity and guarantee operational readiness of equipment to ensure that it is capable of providing the required level of protection throughout its operational life. We evaluate and certify the capability and suitability for its intended use in compliance with API specifications and standards (6A, 16AR, 16C, API 16D, API 53). All testing, inspections, welding, and machining are performed in-house or on the client's preferred location. These activities are performed by our team of certified experts who have garnered experience over the years and are exceptionally acquainted with internationally recognized

standards and procedures.

Well Control Equipment Covered includes but are not limited to:

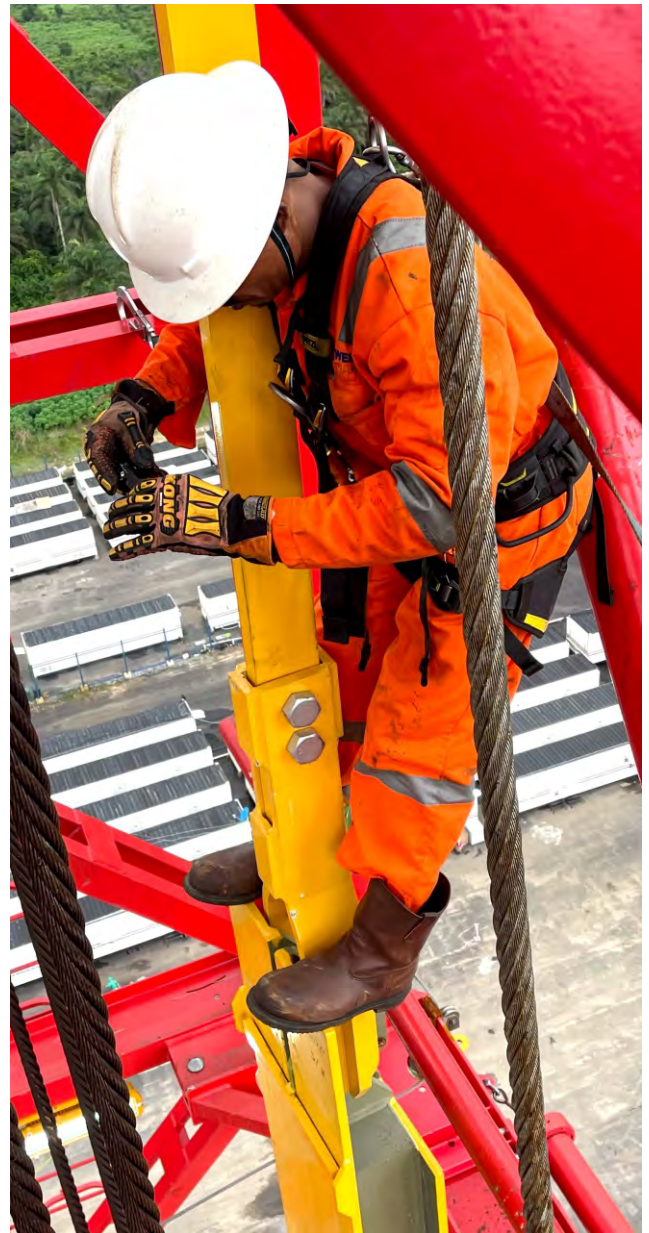
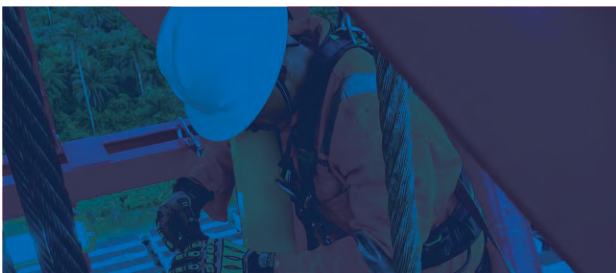
- * Blow Out Preventers (BOPS)
- * Choke and kill manifold.
- * Diverters
- * Accumulator Unit.
- * Mud Gas-Separator



DROPS INSPECTION & SURVEY SERVICES

WESTEND DIAMOND ENERGY LIMITED offers a range of dropped object management and inspection services to avert personnel injury and damage to assets. We are committed to providing a detailed and thorough dropped object safety solutions. For decades, whilst utilizing a systematic approach, we have delivered excellent DROP management services to a wide range of clients in Africa and beyond. We have established and implemented a DROP management system that aligns with relevant regulatory requirements. Our team of trained DROP inspectors, equipped with unrivalled experience and skills implement this procedure to carry out a comprehensive DROP survey to access and draw out potential hazards, thus creating a safer work environment.

OCTG INSPECTIONS



NON-DESTRUCTIVE TESTING (NDT) INSPECTION SERVICES



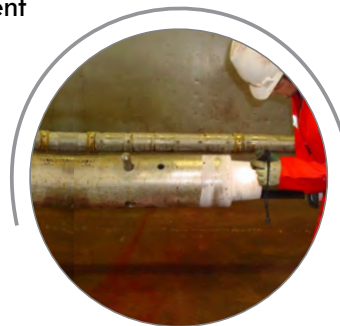
WESTEND DIAMOND ENERGY LIMITED (WEDEL) specializes in Non-Destructive Test on all types of equipment. All our NDT inspection personnel are trained to internationally recognized standards, with either ASNT or PCN accreditation. We are well-versed in all of the following areas:

- Magnetic Particle Inspection
- Dye Penetrant Inspection
- Ultrasonic Inspection
- Wall Thickness Inspection
- Close-up Video Inspection
- Welded Joint Inspection
- Material Identification & Mechanical Testing
- Load Testing
- Pad Eye Load Testing
- API Full Length Drifting
- Thread Gauging
- Alternate Current Field Measurement

NON-DESTRUCTIVE TECHNIQUES

- ET Eddy Current Testing
- MT Magnetic Particle Testing
- RT Radiographic Testing
- PT Penetrant Testing
- UT Ultrasonic Testing
- Visual Inspection
- Structural Classification Survey
- Acoustic Emission
- Infrared and Thermal Imaging

Non-destructive testing from WEDEL – ensures the safe and efficient operation of your equipment and assets by detecting defects before they result in severe damage, and assures compliance with international standards.



OCTG INSPECTION



Westend Diamond Energy Limited offers a variety of services including inspection of OCTG pipe with various diameter sizes. Our operational procedures and practices align with industry standards and client requirements. All OCTG pipes are subjected to destructive and non-destructive testing procedures to identify defects.

Westend Diamond Energy Limited provides a wide range of OCTG inspection services, including:

- Full-body ultrasonic inspection
- Dry or wet Special end-area inspection
- Full-length drift
- Hydrostatic testing
- Hardness testing
- Weld-line inspection
- Full length magnetic particle inspection (FLMPI)
- Visual inspection
- Dye-penetrant inspection
- Ultrasonic thickness gauging

INSPECTION OF EQUIPMENT IN HAZARDOUS AREA

WEDEL SERVICES

WEDEL can independently inspect and verify your installations to the relevant international standards, such as API 500, ATEX or other agreed standards or guide you through the inspection process by either training or project managing your in-house DSEAR team to conduct the work, equipping them with the knowledge to continually monitor inspection and risk assessment records.

Navigating a potentially explosive atmosphere poses unique challenges. Effectively managing such areas necessitates a combination of competence, experience, meticulous planning, specialized installation and maintenance skills, and a comprehensive grasp of safe practices. At Westend Diamond Energy Limited, our inspection expertise plays a pivotal role in providing vital information that ensures the safe operation of these environments.

WEDEL can independently inspect and verify your installations against relevant international standards, such as API 500, ATEX or other agreed standards or guide you through the inspection process by either training or project management services to your in-house DSEAR team to conduct the work, equipping them with the knowledge to continually monitor inspection and risk assessment records.

By partnering with us, you can have complete confidence that your hazardous area installations are safe and compliant, with all inspections completed to the required frequency in accordance with the latest regulations and accompanying guidelines. you benefit from our unwavering commitment to safety, our attention to detail, and our adherence to industry best practices.



INSTRUMENT CALIBRATION AND CERTIFICATION SERVICE



CRITICAL GAUGES CALIBRATION:
WESTEND DIAMOND ENERGY LIMITED (WEDEL) provides calibration services in the following area:

Electrical, Mechanical, Temperature, Pressure, Torque, Ultrasonic, Acoustic, Air flow, High voltage and Light. On-site calibration services for both mechanical and electrical instrumentation are also available.

- DIMENSIONAL TOOLS
- ELECTRICAL TOOLS
- FORCE & WEIGHT TOOLS
- PRESSURE & VACUUM TOOLS
- TEMPERATURE TOOLS
- TORQUE TOOLS

We perform various kind of instrumentation jobs including installation, commissioning, maintenance in field instruments

WEDEL provides complete & fully accredited services for all Gauge calibration and repairs required. We understand the critical nature of gauge calibration to maintaining quality and cost controls. We provide precision controlled environments for gauge calibration, testing and repair. We utilise our advance, state-of-the-art instrumentation laboratory to carry out these services.



THERMAL IMAGING AND NOISE SURVEY SERVICES

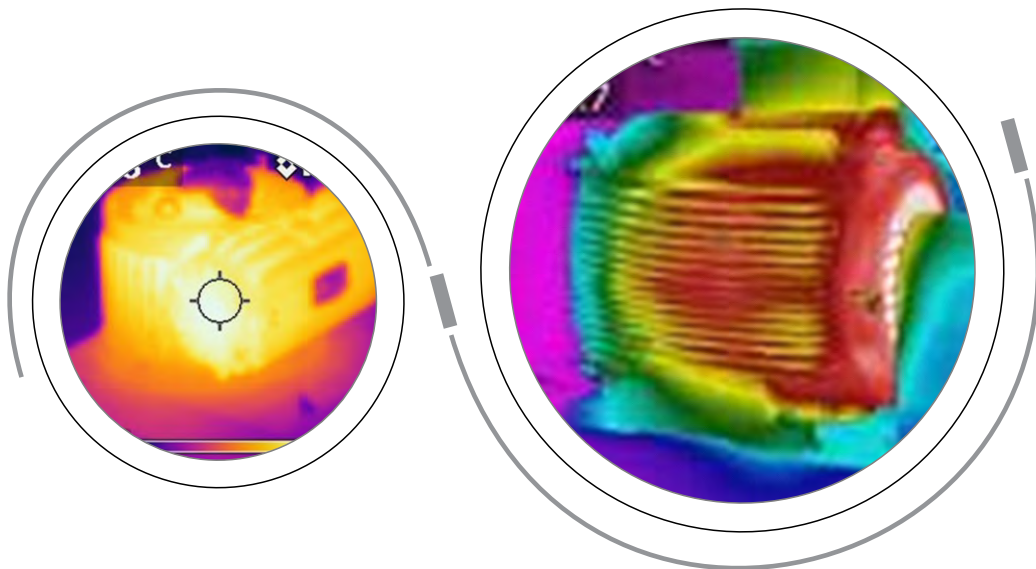


THERMOGRAPHIC IMAGING


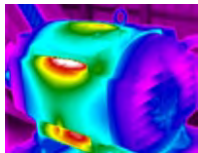
Our thermal imaging services utilize cutting-edge infrared technology to detect and analyse temperature variations in electrical systems, mechanical components, and building structures. By capturing and interpreting thermal data, we can identify potential issues such as electrical hotspots, energy inefficiencies, insulation defects, and equipment malfunctions. This allows for proactive maintenance, energy optimization, and enhanced safety in various industries.

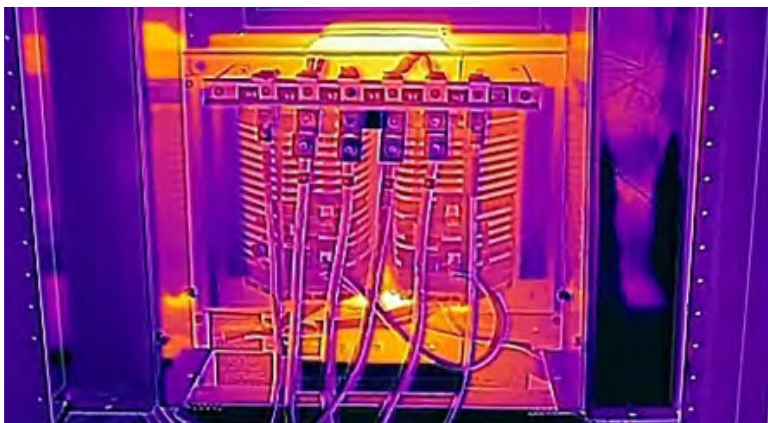
NOISE SURVEY

Westend Diamond Energy Services Limited employs specialized equipment and techniques to measure and assess sound levels in different environments. We conduct comprehensive noise surveys to evaluate noise exposure, assess compliance with regulatory standards, and identify areas where noise control measures may be required.



Thermal Imaging Report Format

SN	Real Vision #	IR Vision	Diagnosis	Prediction	Correction	Prevention	Remark
			Abnormal uneven heating on motor	Bearing washing off, coil bunt.	Realign or replace bearings.	Carry out alignment test	



QA/QC SERVICES CORROSION CONTROL

QA/QC SERVICES

Westend Diamond Energy Limited is a third-party inspection, recertification Company that verifies your system and assets meet requirements and standards. We also provide competent Quality Assurance/Quality Control Personnel to ensure and maintain asset integrity.

Our services include:

Project Management Services

Quality Management Implementation services

CORROSION CONTROL

Westend Diamond Energy Limited is a leading provider of corrosion prevention solutions that cuts across the oil and gas and petrochemical sectors. We deploy global best practices at all levels of corrosion management for process and storage facilities. Our corrosion management services include sandblasting, hydro-blasting, and painting. Our highly qualified engineering team has a track record of exceeding clients' expectations.



REMEDIATION

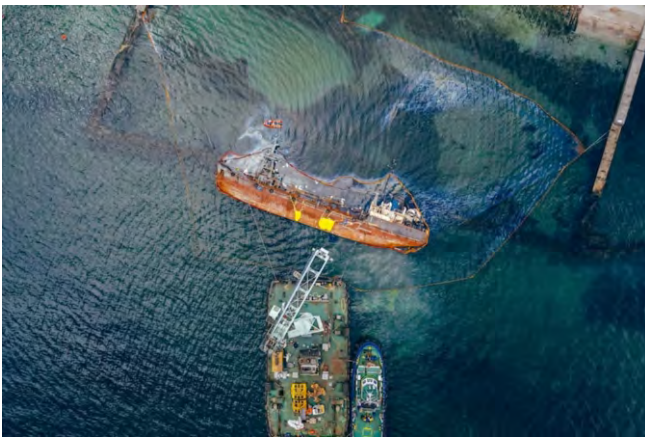
REMEDIATION:

As a leading provider of environmental management, Environmental Impact Assessment (EIA), remediation, and oil spill response services, we are committed to offering comprehensive solutions that address environmental challenges head-on. As a leading provider of environmental management, Environmental Impact Assessment (EIA), remediation, and oil spill response services, we are committed to offering comprehensive solutions that address environmental challenges head-on.

With a team of highly skilled professionals and extensive experience in the field, we possess the expertise necessary to tackle even the most complex environmental projects. To give you the

best services possible, our team of experts stay up to date with the latest industry regulations and best practices. At Westend Diamond Energy Limited, we offer a full suite of services to address your environmental requirements. Whether you need assistance in environmental management, a thorough EIA for your project, expert remediation services, or rapid response to an oil spill, we have the knowledge and capabilities to fulfill your needs under one roof.

We are committed to delivering excellence in every aspect of our services. From the initial assessment to the final implementation, we strive for perfection, ensuring that our solutions are robust, compliant with regulations, and aligned with your specific goals and timelines.



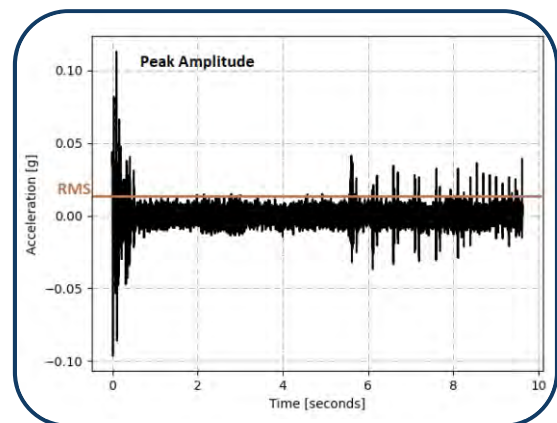
VIBRATION ANALYSIS

Vibration Spectrum Analysis or vibration analysis is an important part of keeping your rotating equipment working at peak performance. By implementing a vibration analysis program, you will be able to identify significant amount of rotating equipment problems including bearing failures before they become disasters. Implementing a customized program will solve your problems WEDEL uses state of the art analysis tools, which is able to collect data on one channel or two channels. We also utilize a specialized software for analysis and developing customized reports to provide all the health and welfare information for your machines.

Advanced Analysis Techniques : WEDEL specialists can employ advanced analysis techniques such as Bump Test, Modal Analysis & Operating Deflection Shapes (ODS) studies which are all progressively more complex and accurate methods to understand and remedy vibration and resonance. Modal Analysis & ODS can provide non-linear or out-of-phase translational / rotational motions in the entire structure. Analyzing the relationships of these points can provide the underlying cause for excessively high vibration levels. These advanced analysis methods can identify and locate problems that may not be identified in other manners of analysis.

Bump Testing is to determine the natural frequencies present in a structure and using modal analysis provides important information and visualization about the manner in which structures are flexing and bending to vibration.

Acceptance Testing ensures that new machines are ready to meet life cycle plans. New machines can fail, but with an acceptance test designed and performed by the highly qualified WEDEL specialists, confirmation that the machine will perform as required is ensured.





Umuebulu 4 off Shell Umuebulu Flow-Station, 500101, Port Harcourt, Rivers State.

✉ contact@westenddiamond.com ☎ +2349033717606

www.westenddiamond.com